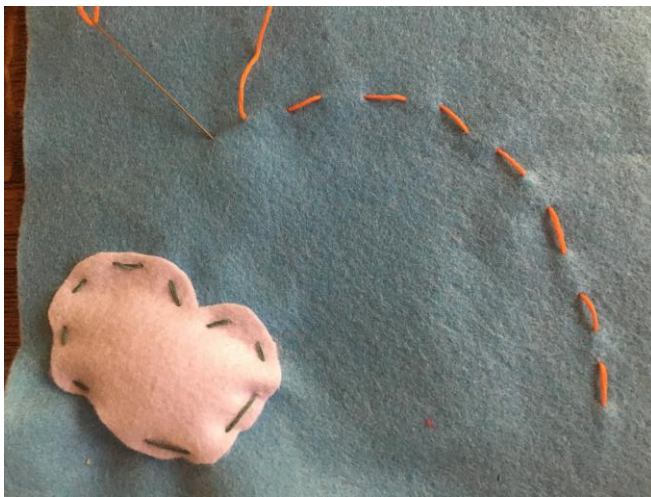


Advanced Sewers: Pictures on Felt

“Drawing” on fabric with embroidery techniques may be used with felt and embroidery floss. Also, a three dimensional aspect can be added by stuffing shapes with wool:



Additionally, students may want to learn how to back stitch to make an unbroken line.
https://www.youtube.com/watch?v=rZ_wVC84UmM

